

Beyond Evidence and Policies to Action: Mobilising Communities for Advancing Planetary Health

Rudolf Abugnaba-Abanga, PhD

UBIDS, Ghana | Global Health Cluster, UMC, Utrecht | Climate TWG, Health Systems Global

10/06/2026

Planetary Health through a health-system lens and how communities can harness their voices, knowledge systems, and social networks to promote climate-responsive health systems.

Outline

01 Introduction

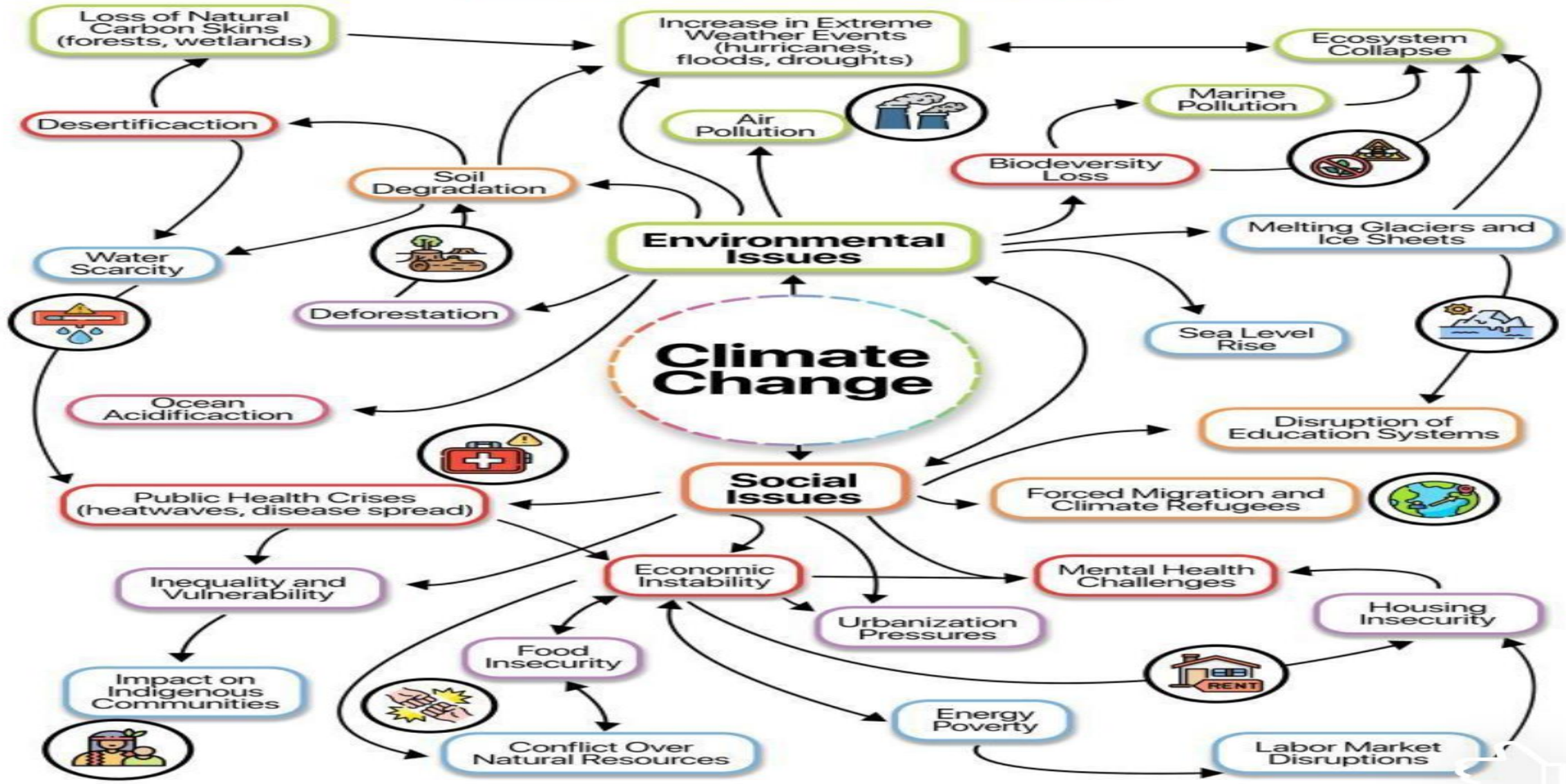
02 Planetary Health, Health Systems & Climate change

03 Community actions

04 Conclusion/Wrap-up

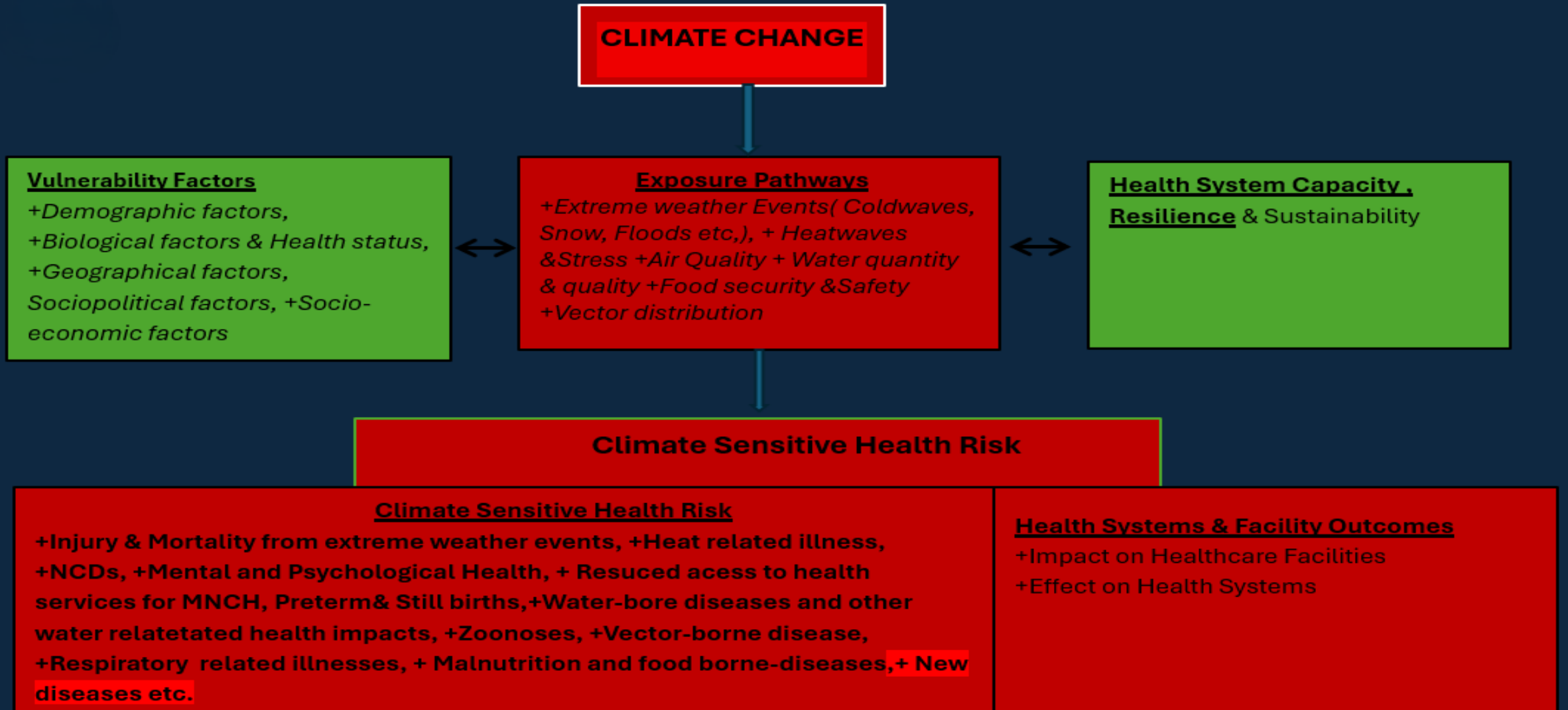
A Wicked Problem Interconnected with Other Global Challenges

Antonio Vizcaya Abdo



<https://www.linkedin.com/company/sustainability-infographics/posts/?feedView=all>

Pathways: climate change, health and health systems



Nexus –Climate Change and Health Systems I



Nexus Climate change & Health (systems) II



Nexus Climate change & Health (systems) III



More than 300 Health Facilities Destroyed By Cyclone Freddy in Madagascar, Malawi and Mozambique

Emergency Response 24/03/2023 · Paul Adepoju

Share this:



Emergency room - Credit: [guynamedjames / DepositPhotos](#) - License: [DepositPhotos](#)

HEALTH TECH NATURE HOSPITAL FLOODING EXTREME WEATHER » MORE TAGS

SHARE THIS:



WEDNESDAY, 23 OCTOBER 2024 - 14:30

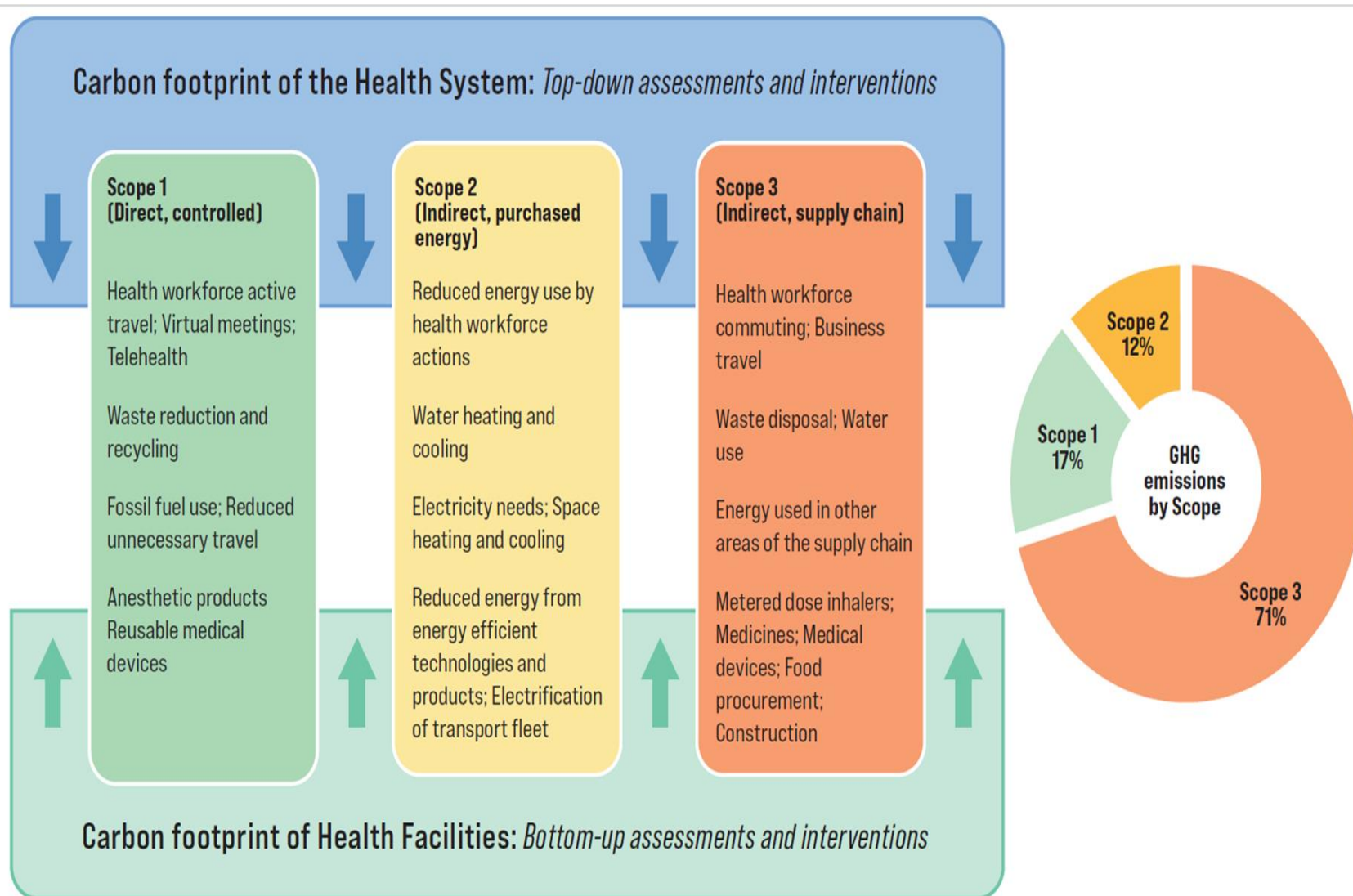
Quarter of emergency rooms in Netherlands inaccessible during extreme downpours

Correction 10:40, October 24 - A previous version of this article mistakenly listed UMC Utrecht, instead of Diakonessenhuis in Utrecht, as one of the hospitals that would become inaccessible

Almost a quarter of emergency rooms in the Netherlands become inaccessible during very heavy rain showers. Their access roads become impassable due to deep puddles or the hospital itself floods, according to research by [Investico](#) in collaboration with [NU.nl](#), De Gelderlander, De Stentor, and [De Groene Amsterdammer](#).

Using a detailed model by research agency Deltares, they concluded that at least 17 of the 77 Dutch hospitals that provide emergency care will have accessibility issues in the event of 70 millimeters of rain falling in two hours. Every location in the Netherlands experiences such a downpour approximately once every 100 years.

Environmentally Sustainable or Low carbon Health systems



- Health sector: 5% global GHG annually (WHO, 2023).

- The health sector is crucial for Global net-zero carbon targets(De Marchi, 2024)

Reduce, Reuse, Recycle



Post Story Health & Technology

Joyce de Bruijn
19 July 2023

Share this page



In intensive care units, 17 kilograms of waste are produced per patient daily. ICU nurse Lobke Hazelaar saw this with increasing dismay and joined one of Erasmus MC's Green Teams.

12 meters of plastic tubing, 108 gloves, 57 compresses, 24 syringes, 16 isolation gowns, 8 pads. It's just a fraction of all the materials that go into the trash daily per intensive care patient, including packaging materials. Every day this leads to 7 full garbage bags per patient.

<https://convergence.nl/>



Example: Energy Systems



Policy to action on the ground: Citizen participation/Perception

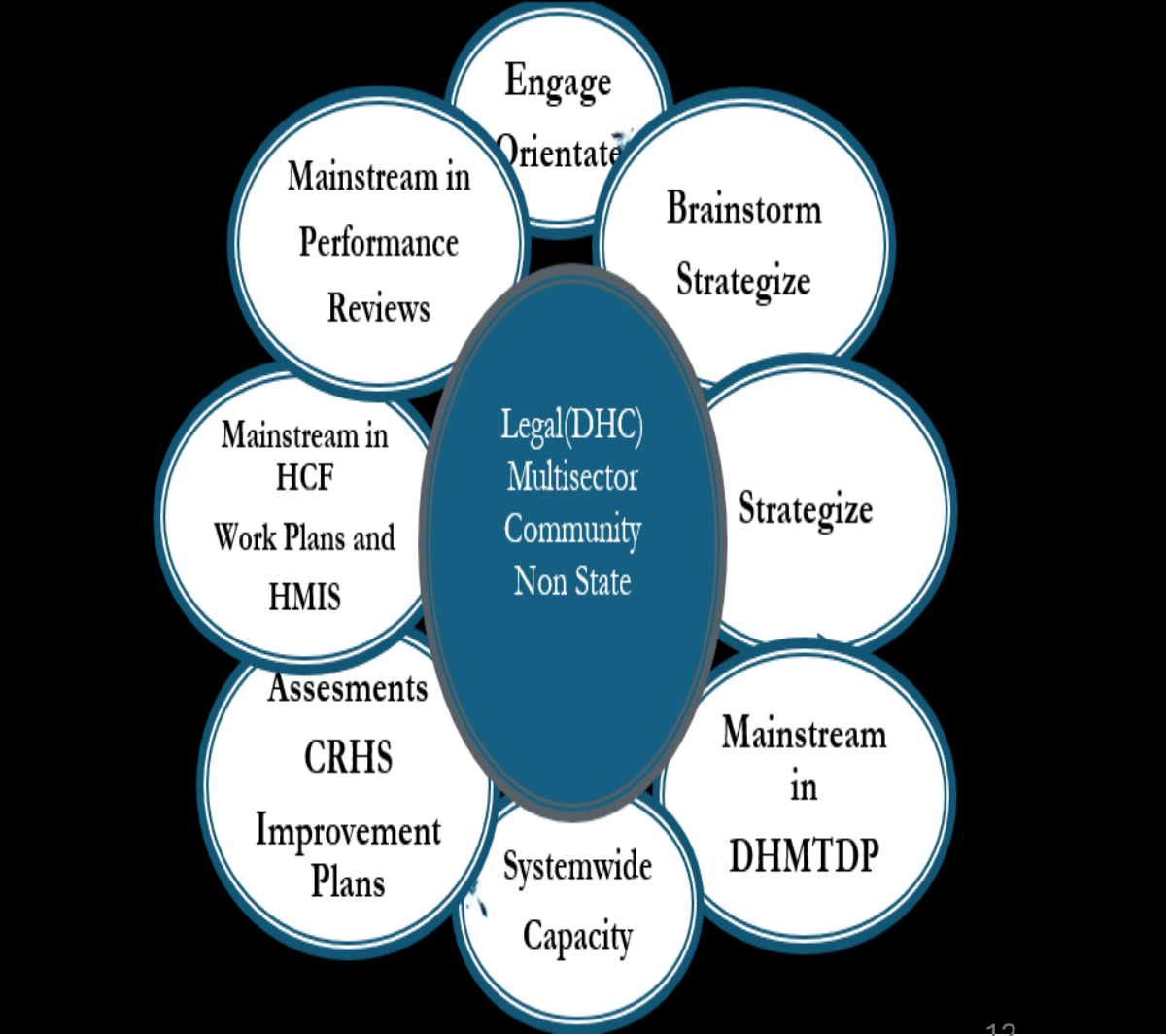
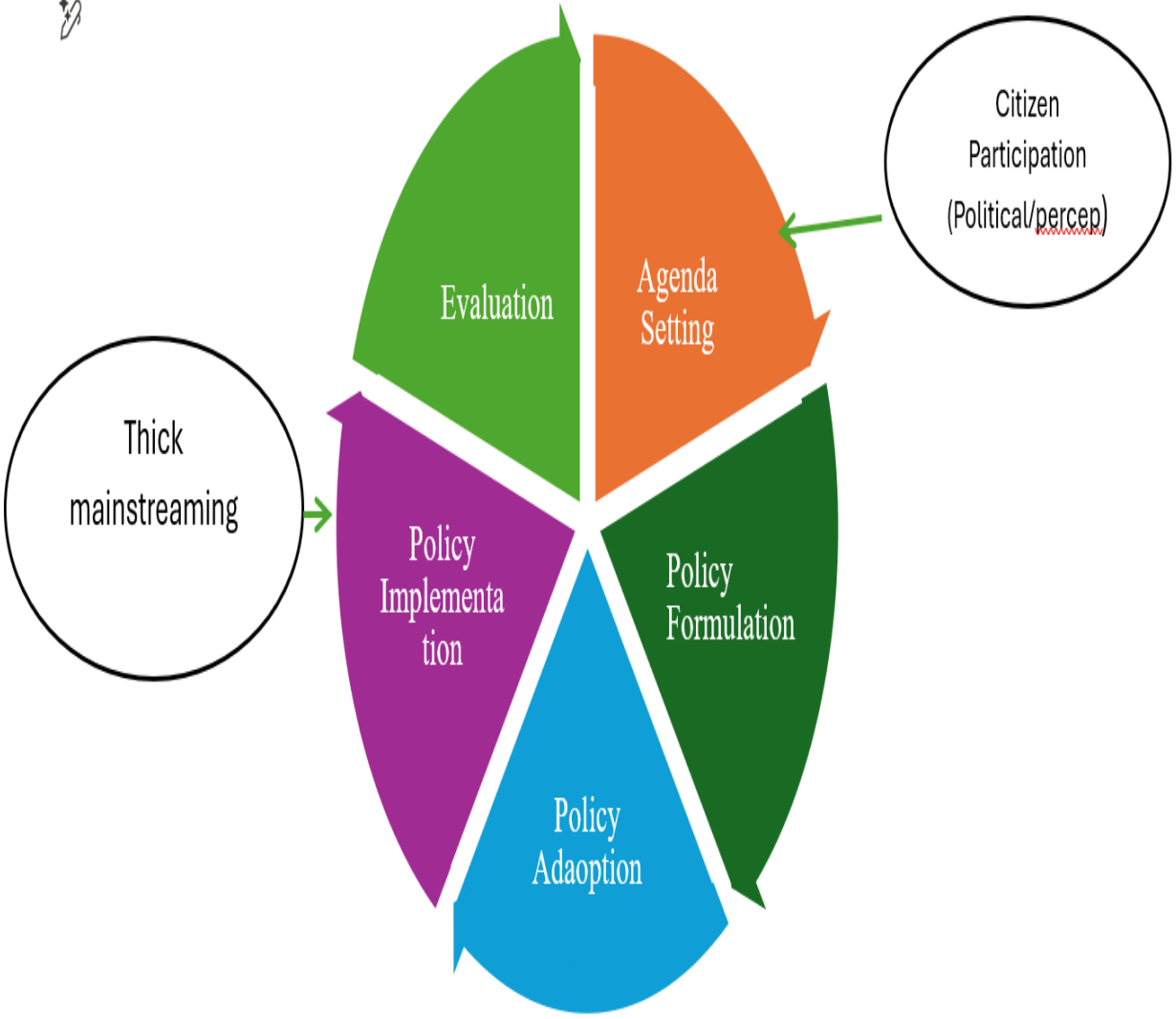


<https://africacenter.org/spotlight/2024-elections/>



voanews.com

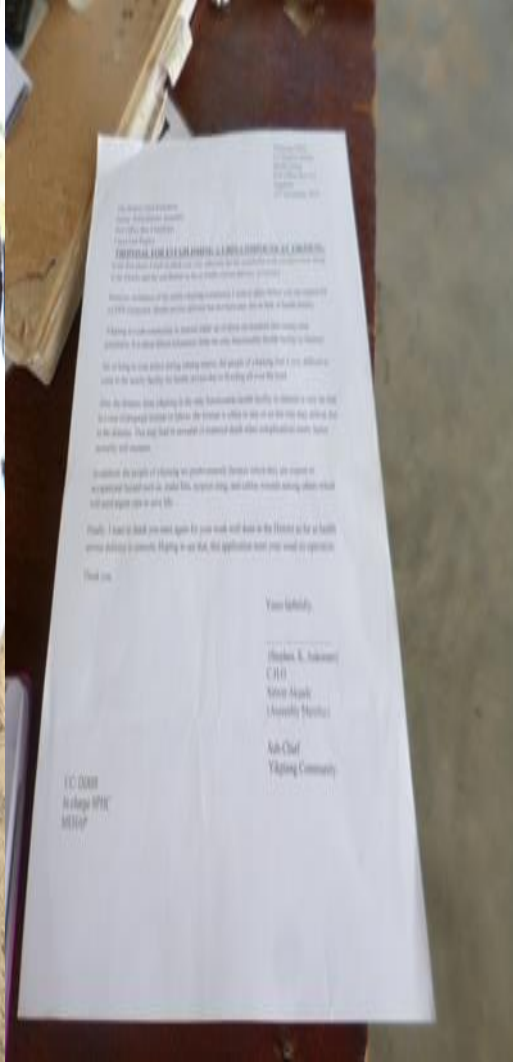
Thick Mainstreaming Approaches



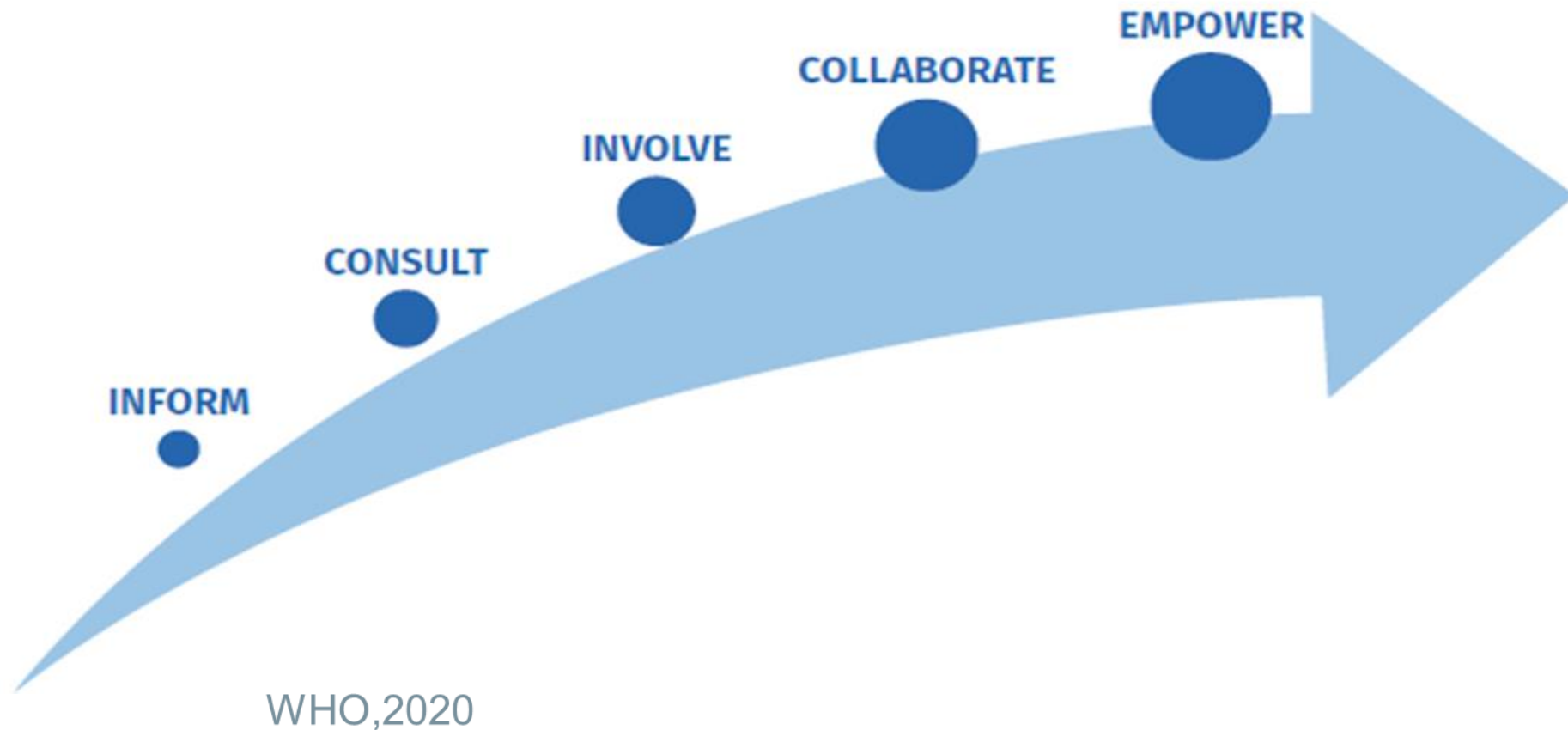
Community participation/ Risk Perception



Social accountability-The case of Yikpien in Northern Ghana



Empowered Communities = Sustainability Climate action



Thank You

Questions?

- How can local knowledge and experience strengthen climate action/climate-responsive health systems?
- What governance shifts are needed to enhance the effective implementation of global commitments/ national policy priorities at the community level?