

6ª edición

TALLER ANUAL GLOBAL DE SALUD COMUNITARIA

Conectando la salud planetaria, la justicia climática y la salud comunitaria: del conocimiento al impacto

9, 10 y 11 de junio de 2026

TALLER ANUAL GLOBAL DE SALUD COMMUNITARIA



Conectando la salud planetaria, la justicia climática y la salud comunitaria: del conocimiento al impacto

9, 10 y 11 de junio de 2026

Bloque 1 : 10.00 a 13.30 CEST

Bloque 2 : 16.00 a 19.30 CEST

Conflict of Interest Disclosure

I declare no conflicts of interest regarding the perspectives presented in this session. The funding bodies played no role in the conceptualization, interpretation, or drafting of this content, nor in the decision to communicate these global perspectives.



About me:



**Eliana
Martínez
Herrera**

1. [2004-] Profesora adscrita al Departamento de Ciencias Básicas, Facultad Nacional de Salud Pública, Universidad de Antioquia, Colombia.
2. [2015] Organizadora de III Encuentro Regional Salud Urbana OPS/OMS, Medellín Colombia
3. [2015-] Profesora invitada del Grupo de Investigación en Desigualdades en la Salud, Ecología y Condiciones de Empleo y, Public Policy Center Johns Hopkins University – Universitat Pompeu Fabra, Departamento de Ciencias Políticas y Sociales, Universidad Pompeu Fabra, España
4. [2016-] Coordinadora y fundadora de la Línea de Investigación “Epidemiología y Salud Urbana” LIESU/GEPI
5. [2016 -] Miembro de la Asociación Colombiana de Salud Pública-ACSP
6. [2017] Profesora invitada IURD U California (Berkeley, EEUU), FdeM UFRO (Temuco, Chile). Investigadora proyecto SALURBAL Drexel University (Filadelfia, EEUU)
7. [2018] Miembro Environmental Health Working Group WPFHA
8. [2018-] Promotora del Seminario Transdisciplinario “Salud Ambiental y Cambio Climático”
9. [2020-2023] Miembro Comité Científico Emergencia Climática Gobernación de Antioquia, Colombia
10. [2022-] Miembro Asociación Colombiana de Epidemiología-ASOCEPIC
11. [2019 -] Gestora e impulsora de la implementación de acciones climáticas de adaptación en Antioquia, Colombia
12. [2024-] Miembro Consejo Científico Escuela Ecología para el Desarrollo Territorial de Antioquia. Gobernación de Antioquia, Colombia

JUNTAMOS

LA SILENCIO

Por lo v



Our collective complacency

Facing an existential crisis, how is humanity responding to the growing disruptions of the future?



Source: Follow The Leaders series, 2011. Isaac Cordal (Pontevedra, Spain), <https://cementeclipses.com/>



JOHNS HOPKINS
BLOOMBERG SCHOOL
of PUBLIC HEALTH



Universitat
Pompeu Fabra
Barcelona

Departament i Facultat
de Ciències Polítiques
i Socials

block and freeze

the dynamics of life

***Mental structures
New paths***

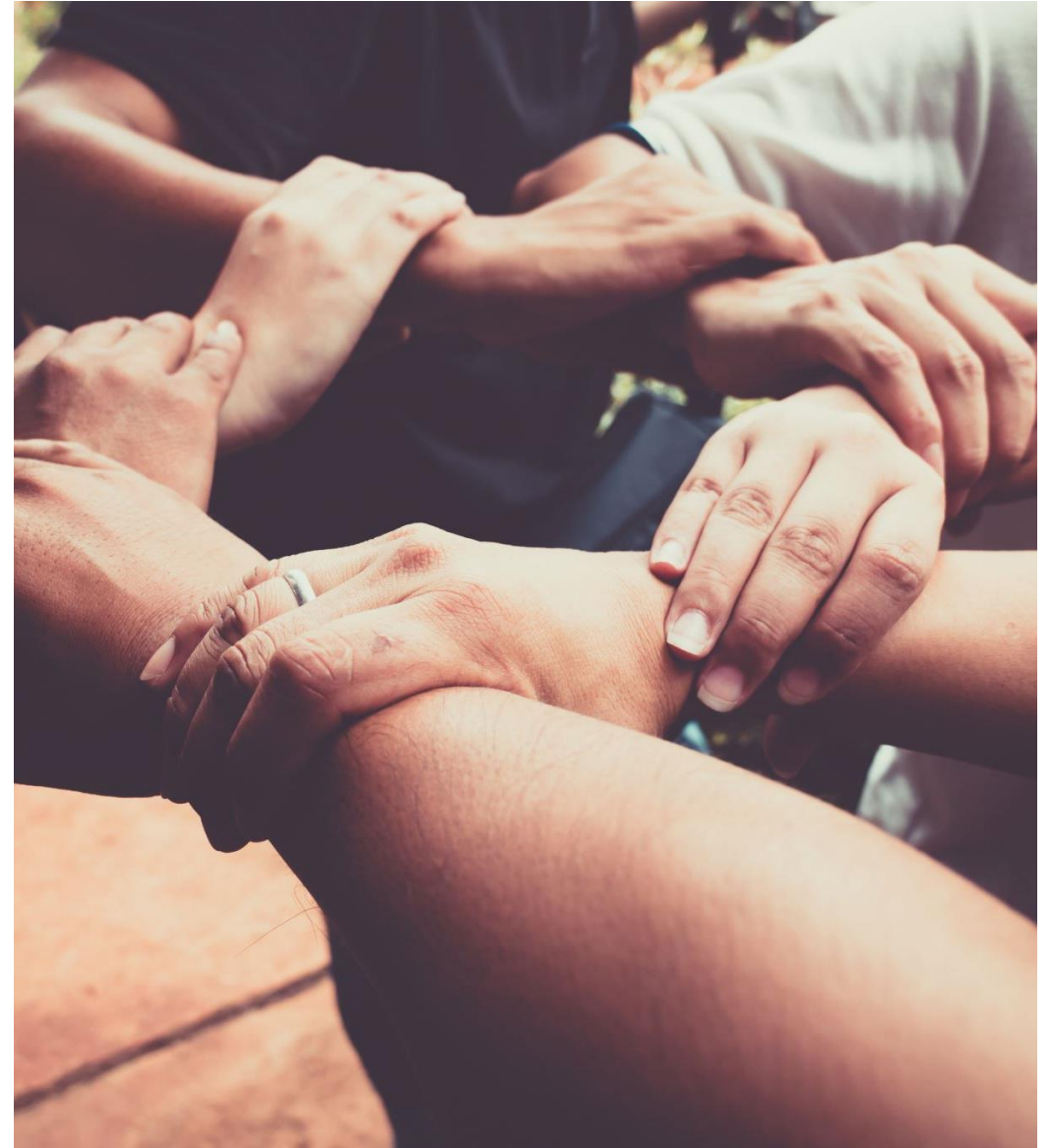
bring and open up

new possibilities

Eliana Martínez Herrera PhD

eliana.martinez@udea.edu.co

June 9th, Shanghai. China



Source: Creative Commons

Outline

The Crisis

Anthropocene, Capitalocene, and the cost of "green sacrifice"

The Vision

Charting the course for Planetary Health.

The Response

Empowering organised Civil Society

The Challenge-The Framework-The Catalyst



Source: Creative Commons



-The Crisis-



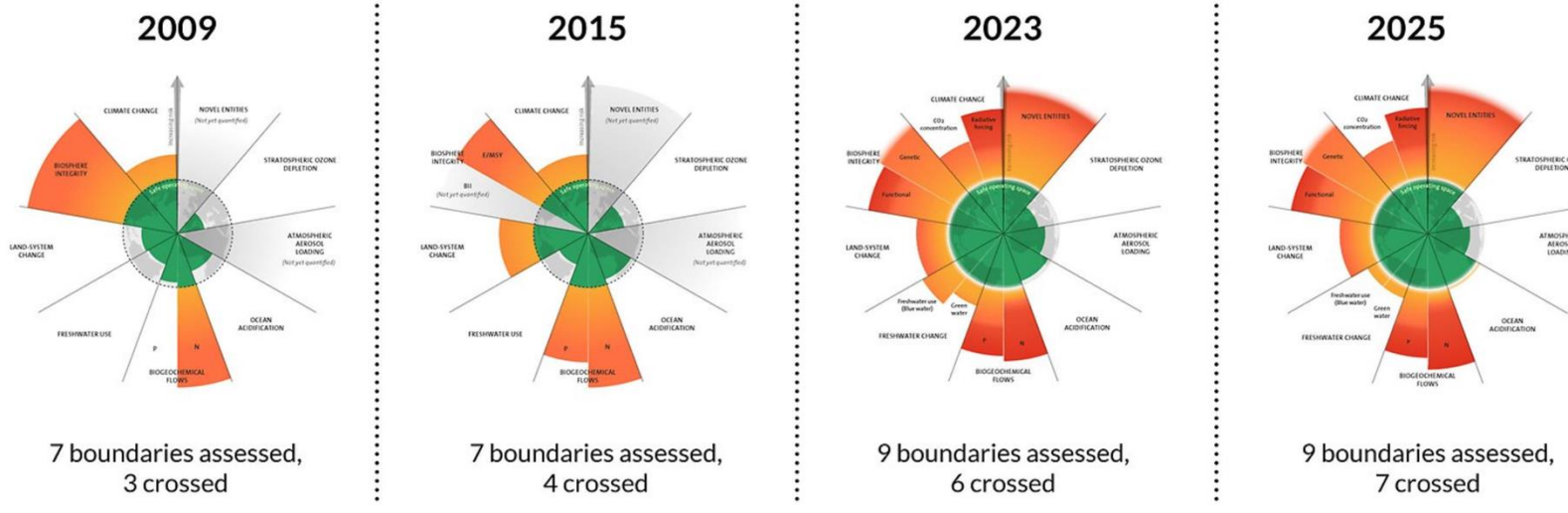
Source: Creative Commons

Source: Moore, Jason W., *Anthropocene or Capitalocene? Nature, History, and the Crisis of Capitalism*, 2016.

Through the lens of political ecology, the planetary crisis is not an Anthropocene event defined by homogeneous biological processes, but a systemic rupture induced by the Capitalocene: an era of destabilisation shaped by colonial dispossession, industrial exploitation, structural racism and patriarchy.

Scientific evolution of planetary boundaries: regulatory ceilings of the functioning of the earth.

We no longer operate within a safe space. We have pushed the planet into a zone of high uncertainty and risk, where the Earth's self-regulating processes are compromised

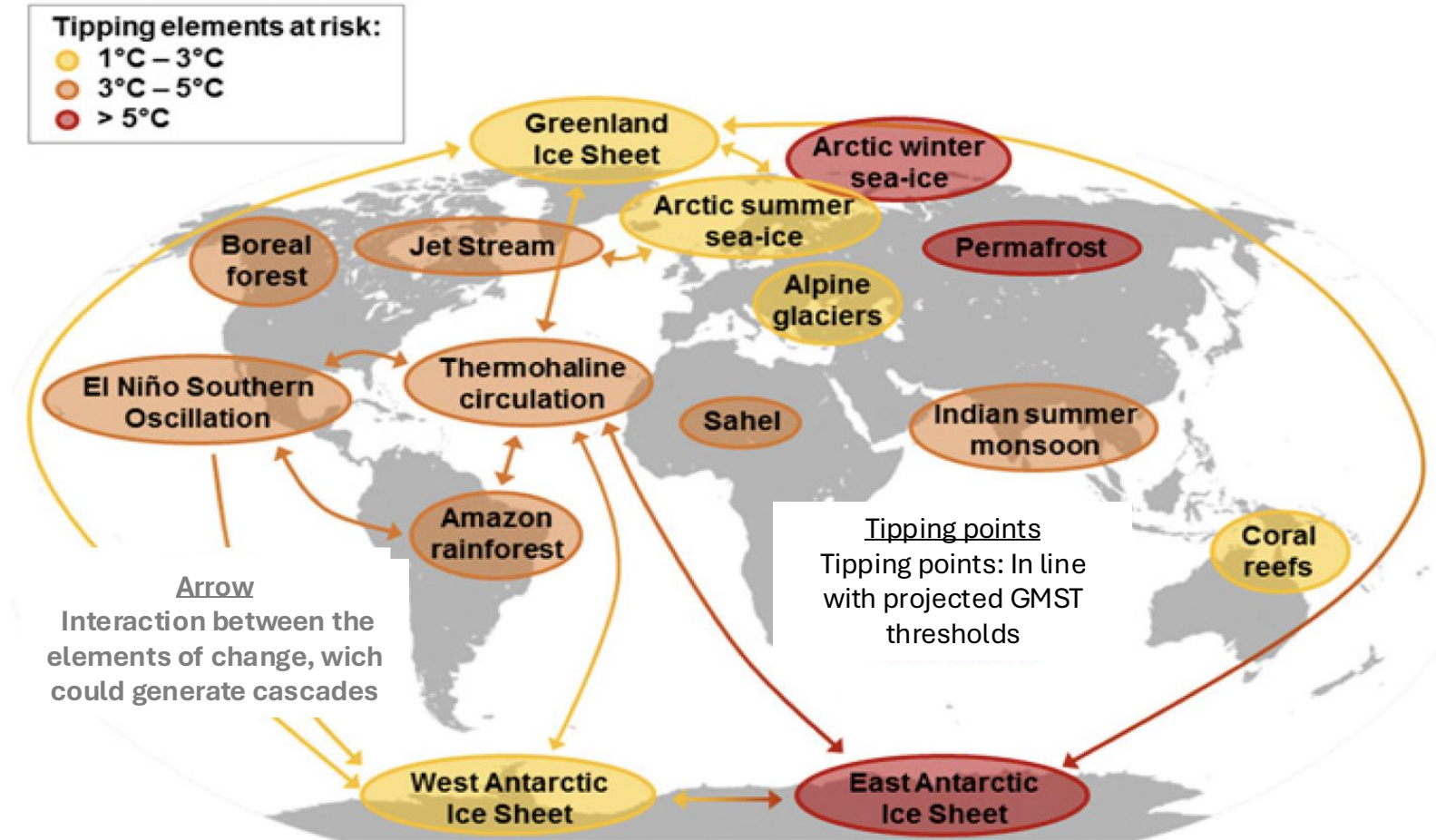


- High risk
- Increasing risk
- Safe
- Boundary not yet quantified

- High risk
- Increasing risk
- Safe
- Boundary not yet quantified

The 2025 update to the Planetary boundaries. Licensed under CC BY-NC-ND 3.0.
Credit: "Azote for Stockholm Resilience Centre, based on analysis in Sakschewski and Caesar et al. 2025"

Resilience and tipping points



The ongoing ecological crisis is far more severe than we generally assume; it represents the systemic collapse of multiple interconnected life-support systems upon which humanity depends.

Source: Walters N et al. Science 2016

El Origen del Desafío Climático

Las áreas urbanas son la mayor fuente espacial de Gases de Efecto Invernadero (GEI). Comprender su estructura es el primer paso para la mitigación.

71-76%

de las emisiones globales
proviene de áreas urbanas.

Alcance 1 - Emisiones Directas

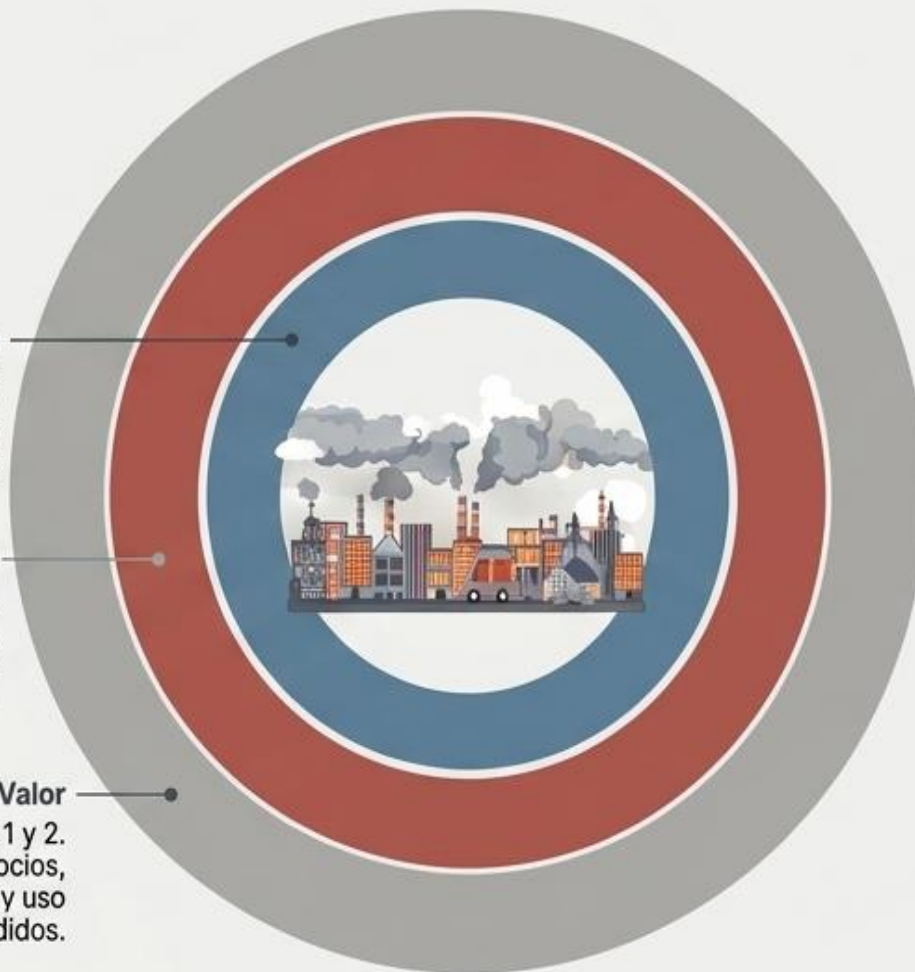
Fuentes directas in situ: procesos industriales/fabricación, transporte local, centros de datos.

Alcance 2 - Indirectas

Electricidad comprada, vapor, calefacción y refrigeración. (El impacto depende de la fuente de generación).

Alcance 3 - Cadena de Valor

Mayores que el Alcance 1 y 2. Incluye viajes de empleados/negocios, bienes y servicios comprados, y uso de productos vendidos.



Sectores Clave para la Descarbonización Profunda



Electricidad



Edificios



Transporte



Residuos

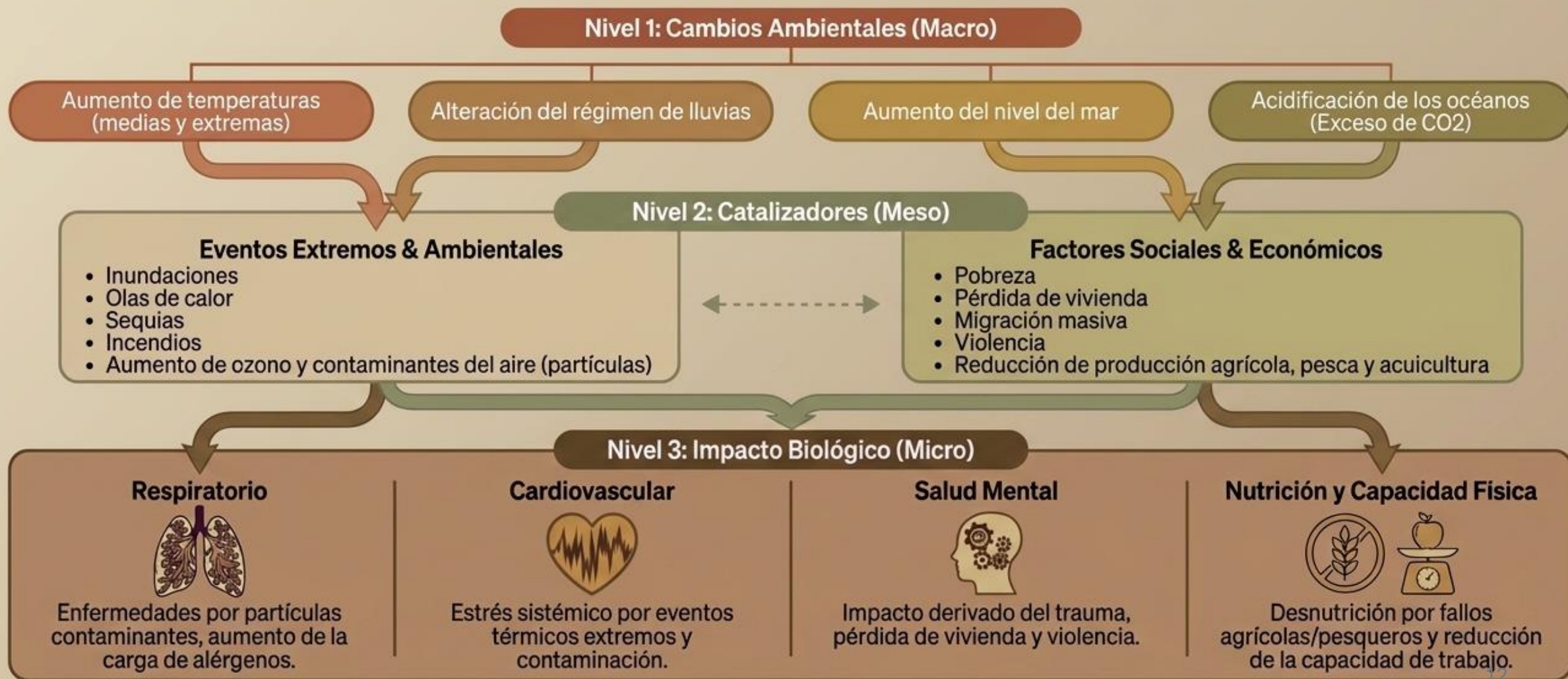


Sumideros de Carbono

Source: Clarke, A.; Tozer, L. *Energy Res. Soc. Sci.* 2022

El Efecto Dominó: Del Colapso Ambiental a la Salud Humana

Las emisiones urbanas desencadenan una reacción en cadena sistémica, donde las crisis climáticas y sociales convergen directamente en el cuerpo humano.



Justicia intergeneracional: la infancia en la encrucijada



920
MILLONES

Expuestos a escasez severa de agua.

820
MILLONES

Altamente expuestos a olas de calor extremas.

600
MILLONES

Expuestos a enfermedades transmitidas por vectores (malaria, dengue).

2
BILLONES

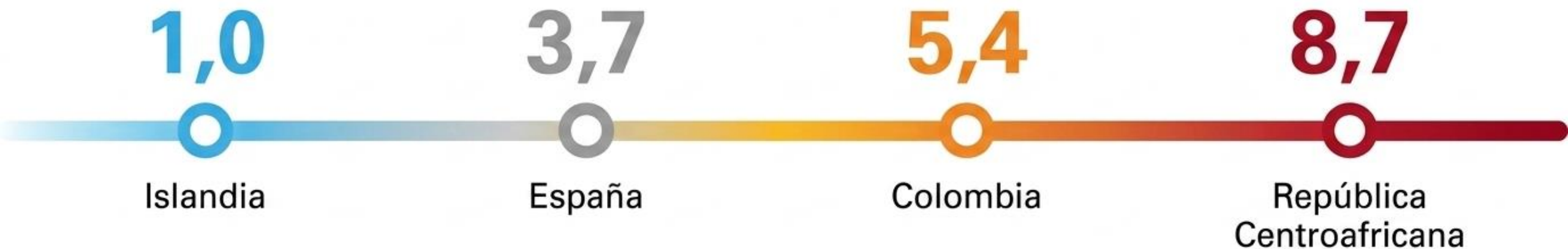
Expuestos a contaminación del aire por encima de $10\mu\text{g}/\text{m}^3$.

Source: The Children's Climate Risk Index CCRI.

<https://data.unicef.org/resources/childrens-climate-risk-index-report/> UNICEF, 2021

El impacto desigual de la crisis ambiental en la infancia

Índice de Riesgo Climático de la Infancia (CCRI) 2021 



Riesgo Mínimo

Riesgo Extremo

Source: The Children's Climate Risk Index CCRI.

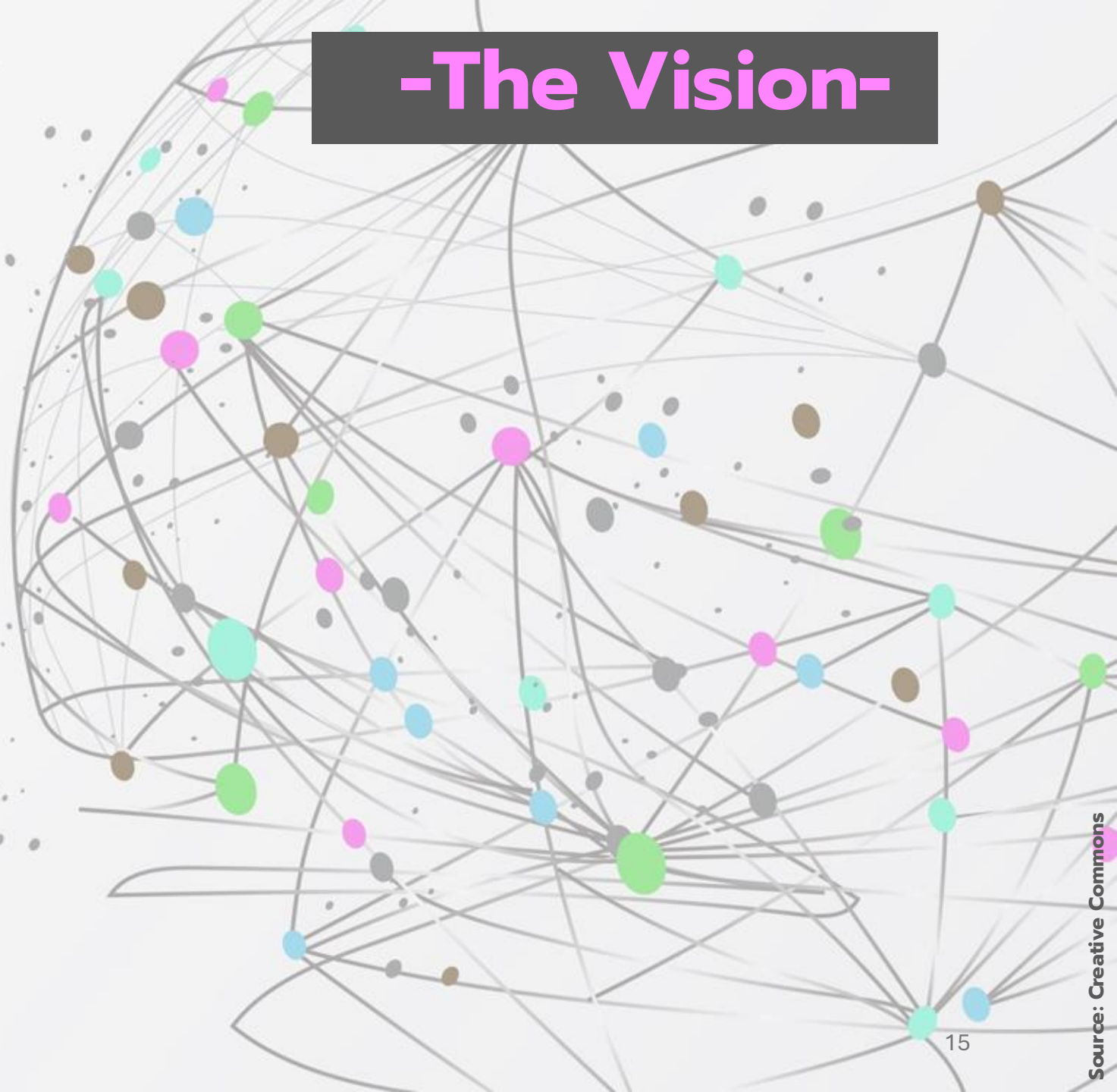
<https://data.unicef.org/resources/childrens-climate-risk-index-report/> UNICEF, 2021

-The Vision-

**Innovative
community actions
are needed to
mitigate
greenhouse gas
emissions and
adapt to their
impacts.**

Source:

Salvador Costa, M.J. et al. Int. J. Environ. Res.
Public Health <https://www.mdpi.com/1660-4601/19/22/14645>, 2022



La interdependencia de la salud planetaria

Movimiento de Salud Planetaria: El florecimiento humano depende de los sistemas naturales.

La degradación de los ecosistemas, sin precedentes en la historia humana, pone en peligro directo nuestra salud y la del planeta.



Megatendencias que plantean desafíos y posibilidades adicionales.

Inspiring and making "greener" options has beneficial repercussions for people's health



**Donnella Meadows,
(60 †)**

Report "The Limits to Growth", (MIT & Club of Rome) in 1972



**Lynn Margulis,
(73 †)**

We are all communities of microbes. The Earth is today the product of symbiosis



**Rachel Carson,
(57 †)**

Environmental Impact of Pesticides That Silenced Bird Life



**Katherine Richarson,
(73)**

Leader in ODS Formulation



**Vandana Shiva,
(75)**

Only love will save the earth



**Yayo Herrero,
(62)**

Ecofeminist and Eco Socialist



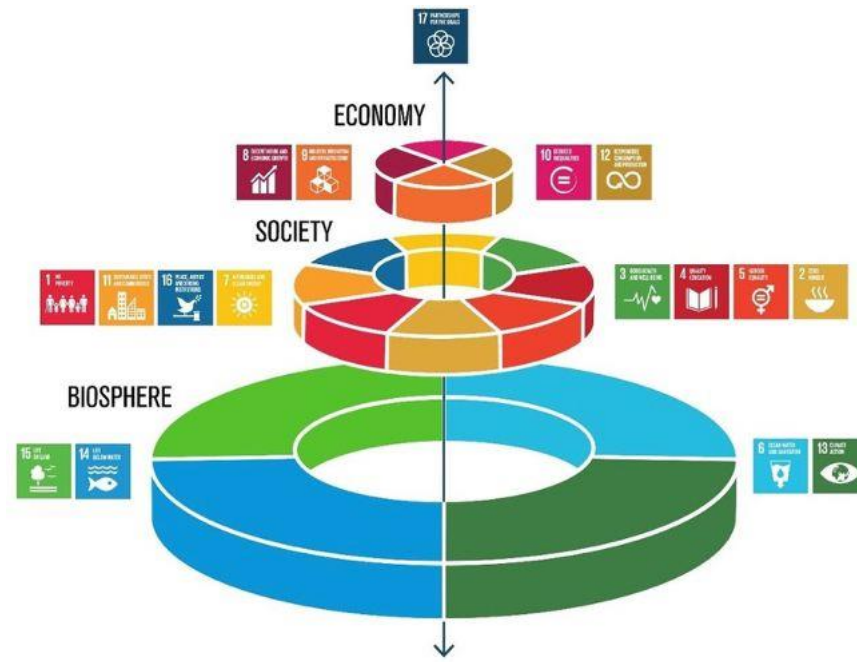
**Hanna Haveri,
(39)**

Neurologist. Planetary Health MD.

The doctor prescribes switching to environmentalism



Johan Rockström (58)



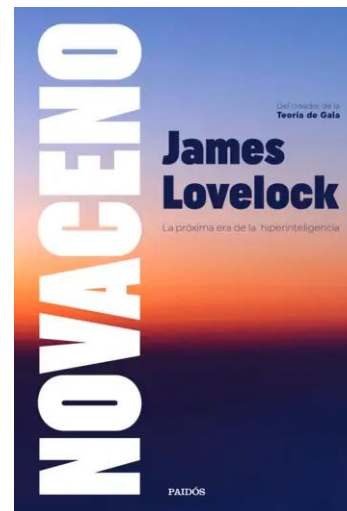
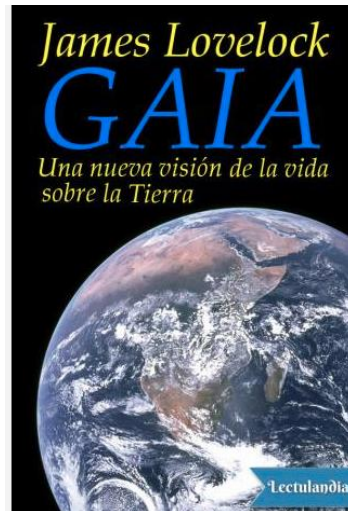
Wedding Cake. ODS, 2016



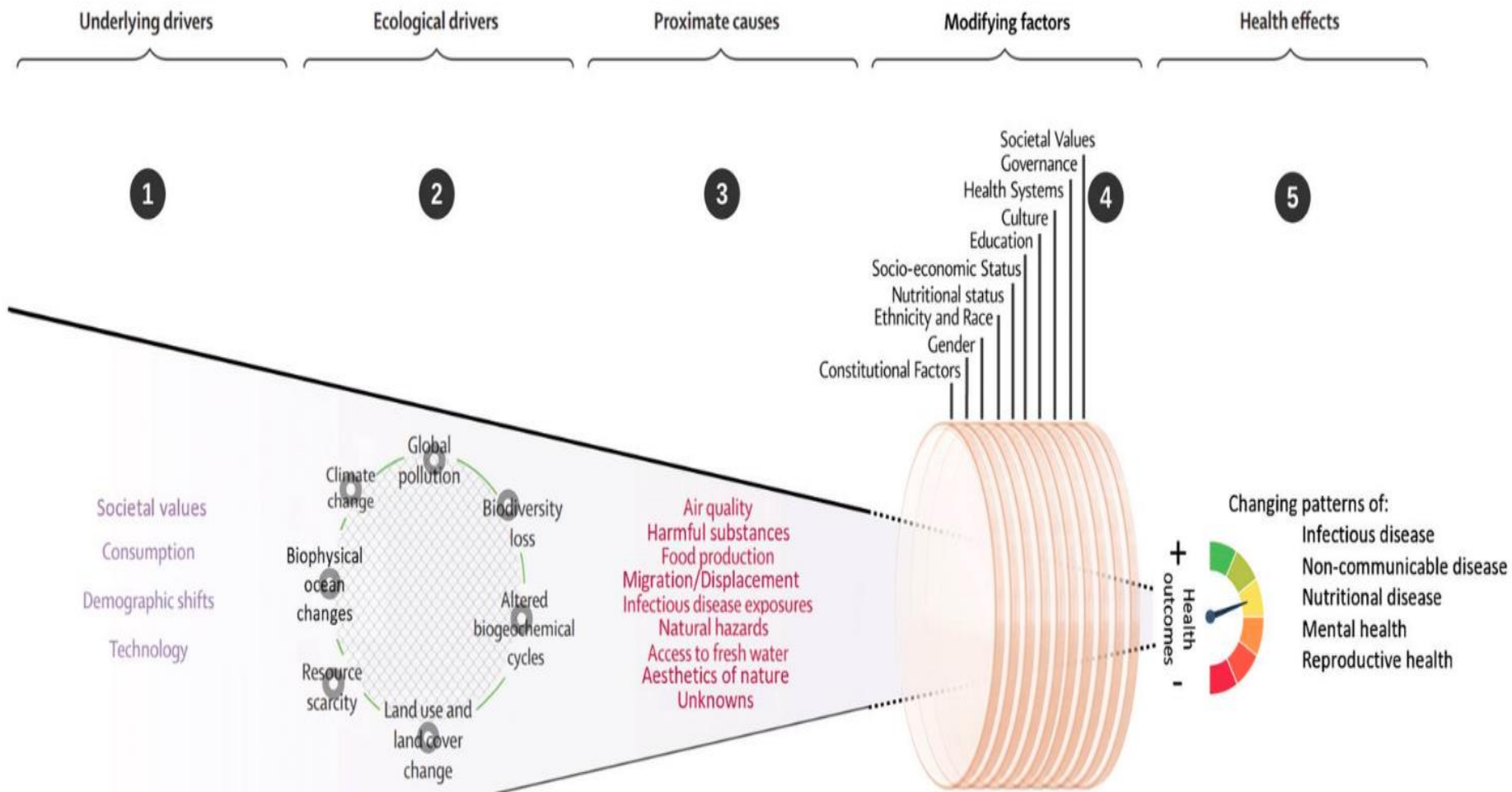
“Earth is alive, trees live, stones live, sky lives—they are sacred.
 Mother Earth says: I sing old songs and praise the holiness of life and unity of all. I do not want my child to die”



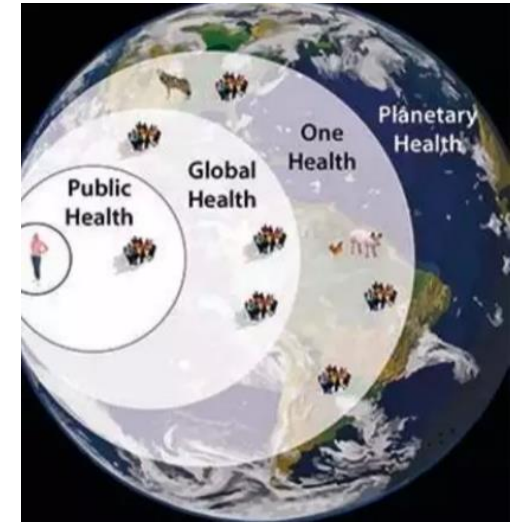
James Lovelock (103 †)



Haahtela, Antó & Bousquet, 2021

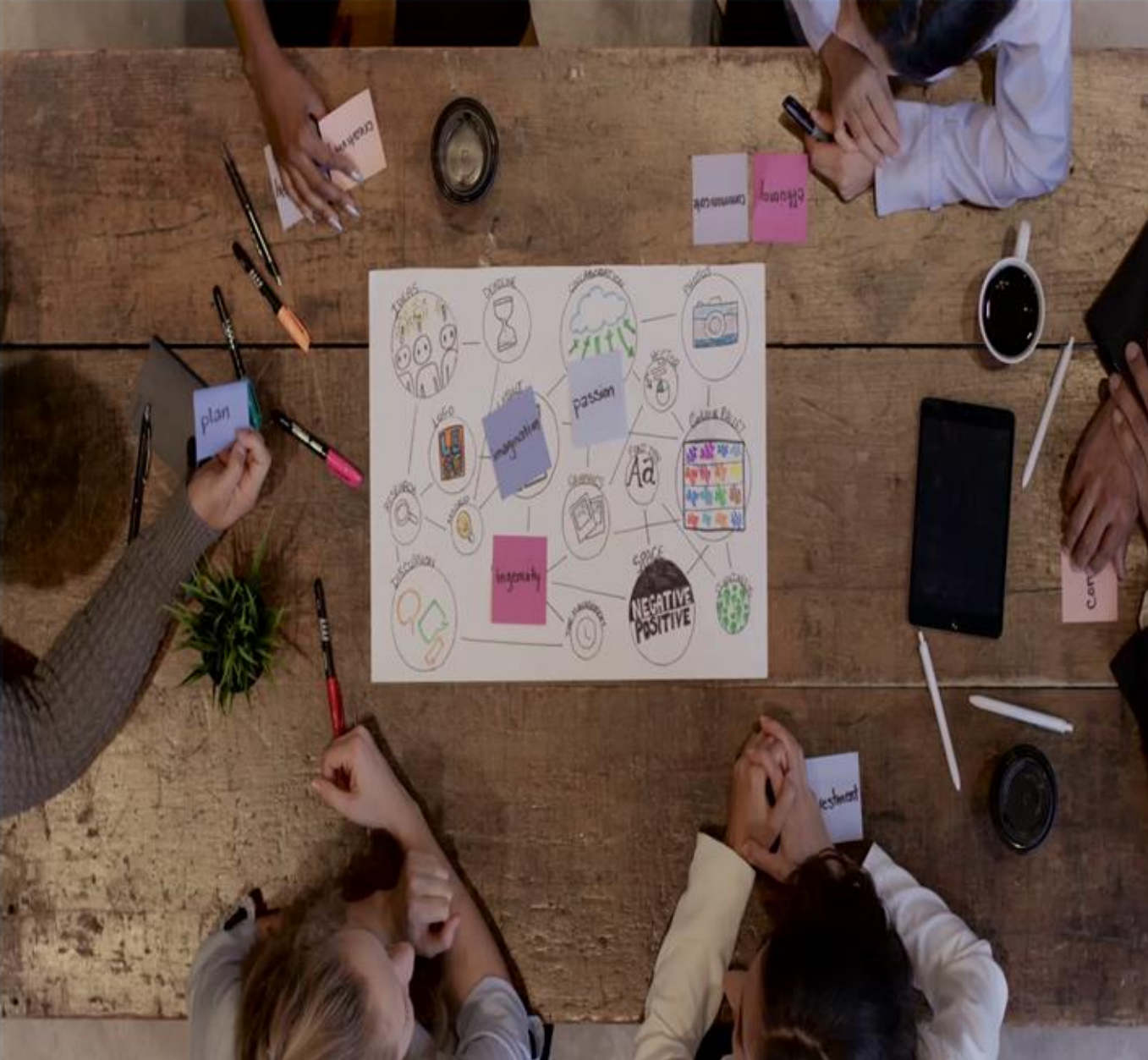


Source: Myers S et al, 2017 & Duff et al, 2020



Source:
Whitmee S, 2015

A Planetary Health Framework



-The Response-

The mobilization of Organized Civil Society



Seminario Salud Planetaria. Hacia un enfoque transdisciplinario, sistémico y político. Medellín, 2024



[... I am very grateful and proud to announce my appointment as Children's Advisor to the Committee on the Rights of the Child of the @ONU #Colombia and Latin America. I will continue with #ecoesperanza raising my voice for children, the weather and life...]

NNUU, 2021



[...Eco-hope is not about sitting back and waiting for a miracle for the Earth...Defending life and our common home is not a utopia; it is the present we are already building...]

CCCB, 2026

[... **justice as recognition,**
...acceptance, climate
change has irreversibly
wiped-out valuable
forms of life, proposes
the creation of
mechanisms for the
participation of all
affected people in
political decision-
making...]



¿Are we
moving
towards
climate
justice?

Universal
Ontological
Ecofeminist
Intergenerational
Anticapitalist



Being part of the transformation of the world is not a privilege of some, it is a right of all. No one can say the true word about the changes in the world on their own or say it to others as an act of prescription.

We all need to transform our vision of the world, and this implies, as an imperative, an integration of our voices and our words.



[...A proactive approach to planetary health prevention is needed to **anticipate new problems, anticipate worst-case scenarios, and implement the most positive healthy actions...**]

Source: The case of planetary health. 2022. JECH

The Future is now - Mural AGNU77- Eduardo Kobra, 2022



United Nations



Summit of the Future
Our Common Agenda



<https://www.un.org/en/summit-of-the-future/documents>

Capacidad de visualizar múltiples posibilidades de mundo y de la vida cotidiana, tanto a nivel personal como colectivo. Es crear imágenes o historias del "mañana" y usarlas para guiar lo que hacemos ahora.



<https://2084futurosimaginados.org/museo/>

A transdisciplinary approach

Principle	Key features
Critical and complex	Break down rigid academic hierarchies, integrating diverse knowledge to address and solve real-world problems.
Interconnected and systemic	Link environmental degradation, social inequality, and public health, moving beyond isolated views to find comprehensive solutions.
Structural and multiscale	Analyze how large-scale structures, such as capitalism and colonialism, generate crises, examining them from the local to the global level.
Social and historical	To avoid repeating the mistakes of the past, solutions must be rooted in the social, political, and historical contexts that give them meaning.
Committed to participation and democracy	True change demands the democratization of science, involving affected communities and valuing their knowledge in collective decision-making.
Timely and practical	Transdisciplinary work must produce useful and relevant solutions without sacrificing the rigor of critical analysis or political lucidity.
Transformative	This approach goes beyond analysis to actively transform the world, addressing the root causes of our current interconnected crises.

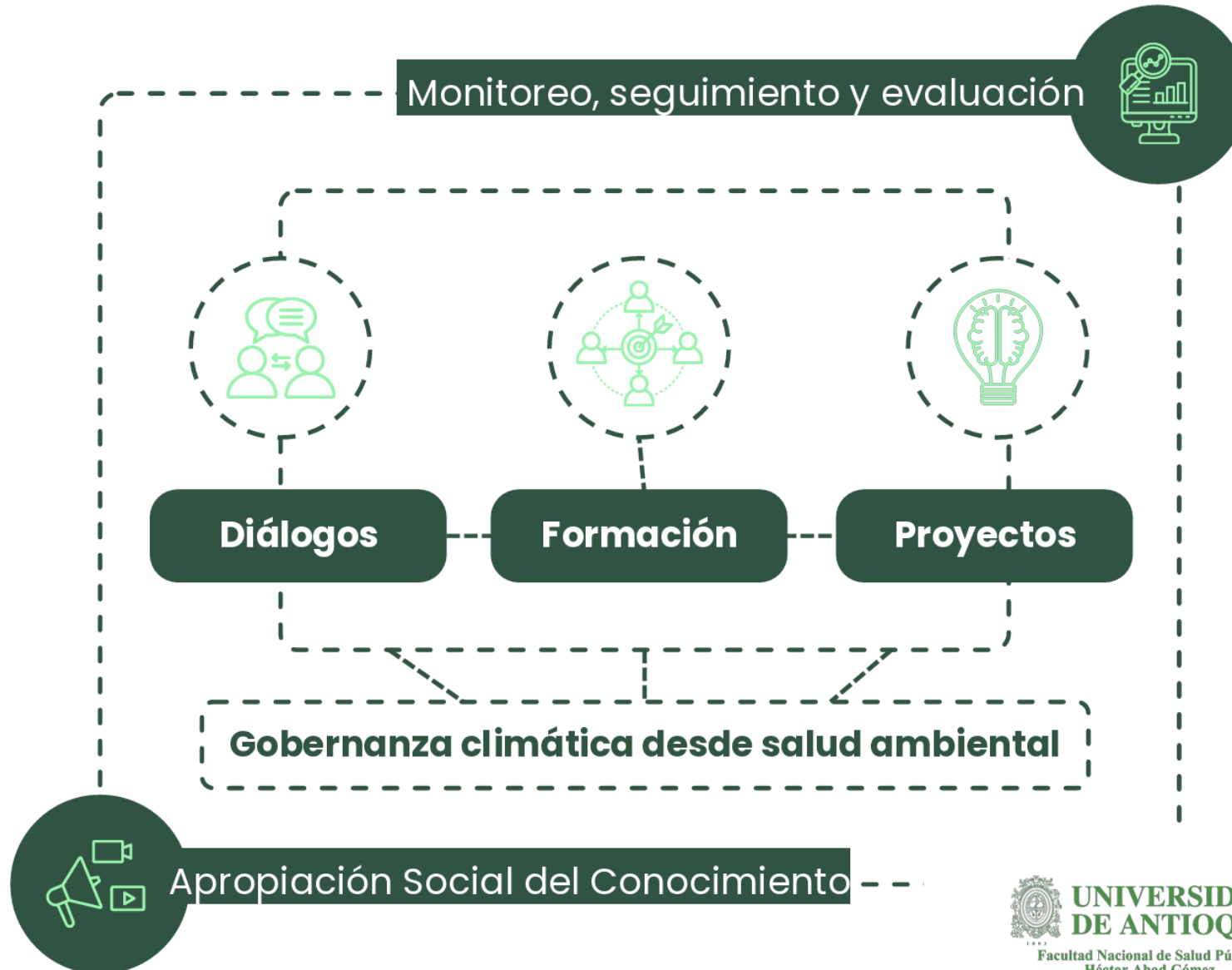
Benach J, Cash-Gibson L, Zografos C, Vivas L, Morrison J, Martínez-Herrera E, et al. Seven principles for a critically-engaged transdisciplinarity to advance planetary health equity (submitted 2026)

Plan de Adaptación al Cambio Climático desde Salud Ambiental para Antioquia

El pulso del territorio
(PACCSA 2021 - 2031).

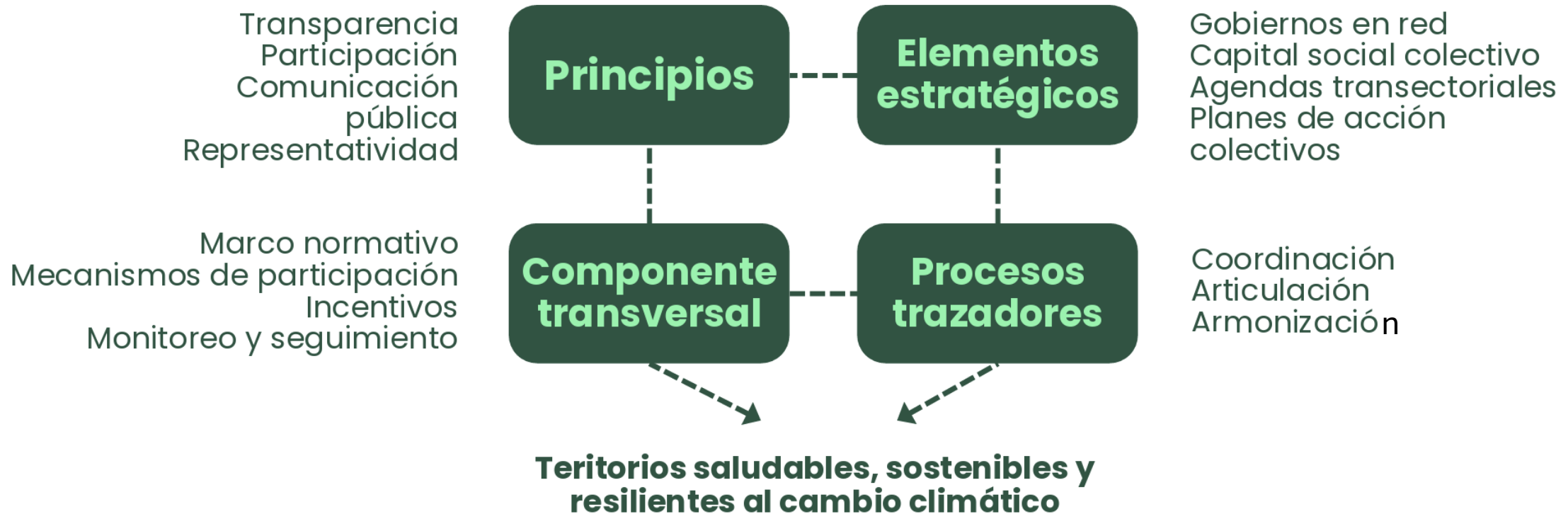


Modelo de implementación



Modelo de Gobernanza Climática en Salud

Gobernanza multinivel colaborativa



Diálogos en la implementación de acciones del mediano plazo

Alcaldía de Remedios, 2025



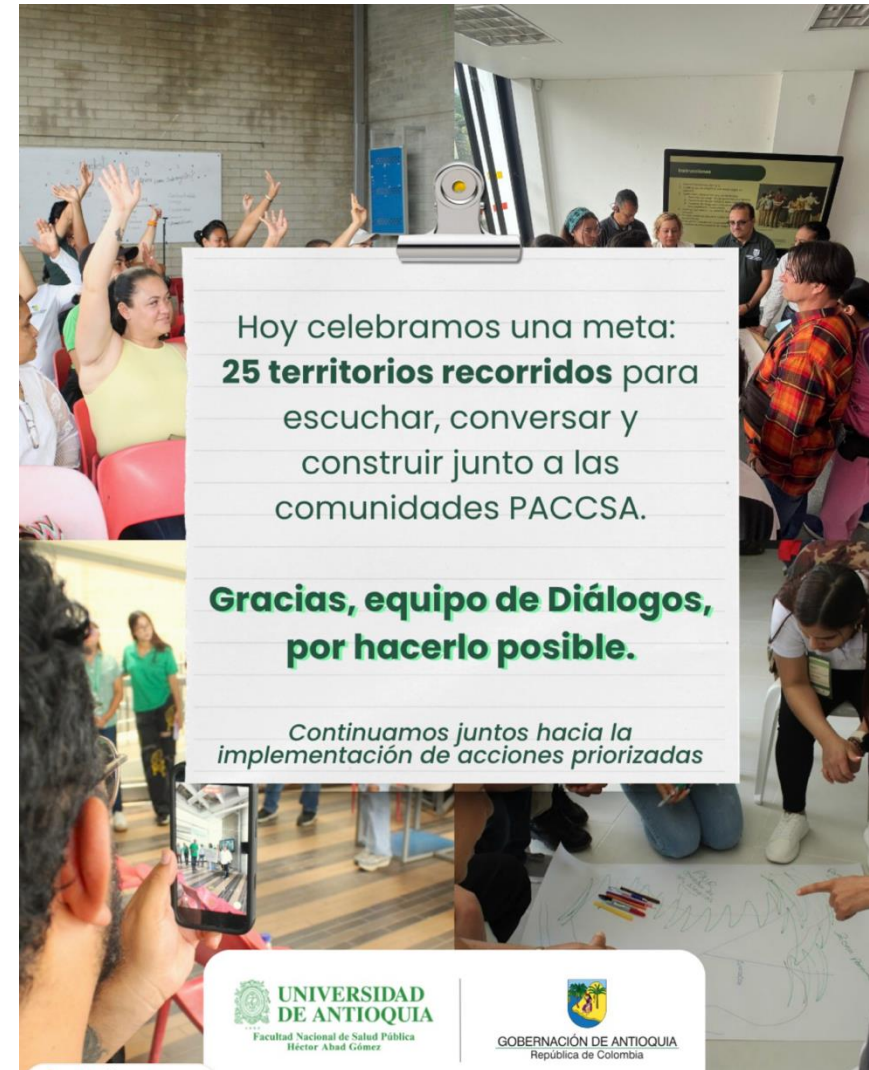
**UNIVERSIDAD
DE ANTIOQUIA**

Facultad Nacional de Salud Pública
Héctor Abad Gómez

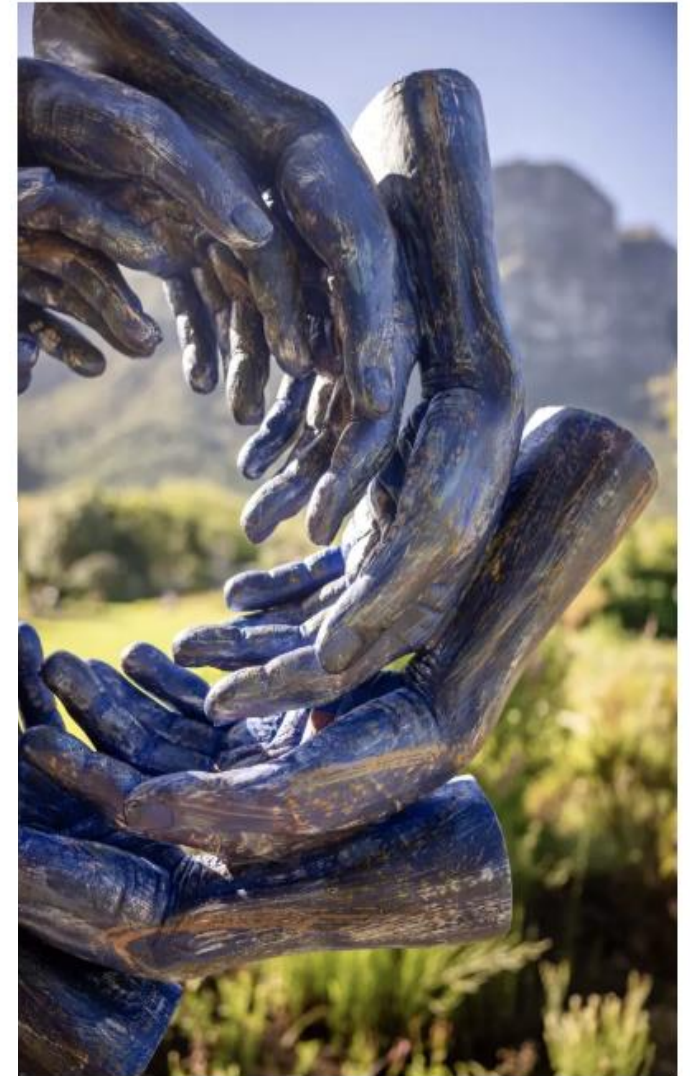


GOBERNACIÓN DE ANTIOQUIA
República de Colombia

Climate justice means solving the environmental crisis by tackling human inequality through fair resource sharing and protecting both vulnerable and future generations.



**In gratitude
for the cross-
fertilization of
new paths.**



**Source: Together. Anton Smit. “Art meets nature”.
National Botanical Gardens. South Africa, 2022**



SAVE THE DATE

August 31 to September 3



WCE 2027

XXIV World Congress of Epidemiology
Medellín, Colombia, August 31 to September 3



**Rethinking Epidemiology for a
Changing World: Data, Science, Equity
& Action**

Subscribe to our newsletter





Thanks- Merci - Grazie - Obrigado - Danke -
Спасибо - Dank je - Ευχαριστώ - 谢谢 - ありが
とう - 감사합니다 - धन्यवाद - شكرا - תודה -
Salamat - Teşekkür ederim – Asante -
Ngiyabonga – Mahalo - Kia ora - Fa'afetai –
Gràcies - Eskerrik asko - Graza – Sulpayki-
Tlazohcamati – Aguyje.